

# Penetration Testing as a Service

## Penetration Testing for the Modern Enterprise

### The Challenge

The cybersecurity landscape has fundamentally shifted. With attack surfaces expanding exponentially and threat actors increasingly leveraging AI to scale their operations, traditional security methods can't keep up.

**Organizations face a perfect storm of challenges:**

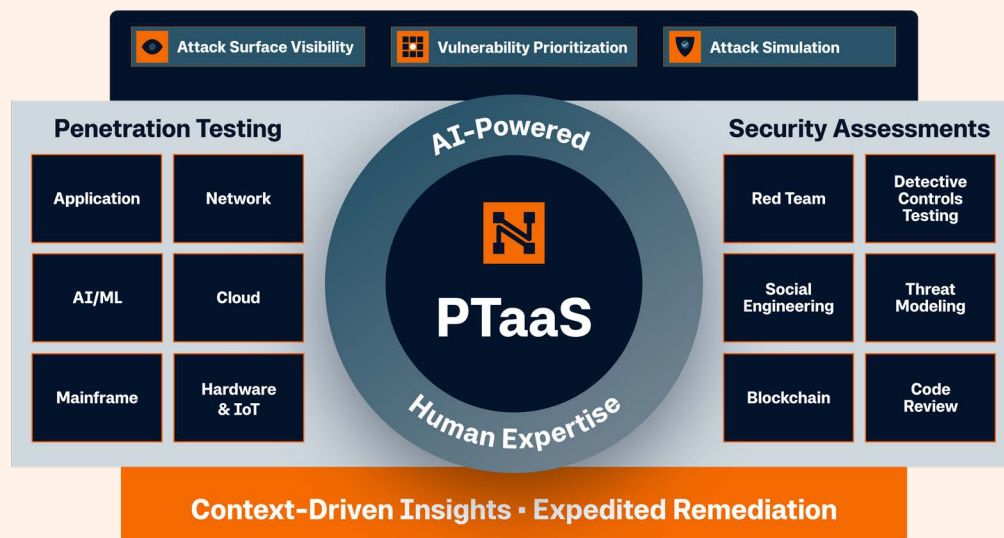
- **Expanding Attack Surface:** Thousands of assets across cloud, on-premises, and hybrid environments create countless entry points.
- **Rapidly Evolving Cyber Threats:** Adversaries adapt faster than defenses, constantly introducing new tactics and attack methods.
- **Overwhelming Vulnerability Volume:** Inundated with alerts and vulnerability data, it's difficult to identify and prioritize what matters.
- **Uncertain Response Readiness:** Many organizations don't know if their teams and systems would withstand a real attack.
- **Outdated Testing Results:** Point-in-time pentesting quickly loses relevance as the environment changes, delaying remediation.

The result? Organizations struggle to gain and maintain meaningful visibility into their true security posture and risk exposure. Without comprehensive, continuous testing backed by expert analysis, critical vulnerabilities remain hidden until it's too late.

### The Solution

Enterprises need more than checkbox pentests; they need a dynamic approach that keeps pace with modern threats. NetSPI delivers penetration testing built for this reality, helping organizations validate security against evolving attacks and growing digital footprints.

By combining AI-driven speed and scale with the expertise of 350+ in-house pentesters, NetSPI delivers modern penetration testing that provides real-time visibility across the attack surface, expert-validated findings, industry-leading low false positives, and streamlined workflows for testing, prioritization, and remediation—giving security teams clear, actionable insights to stay ahead of emerging risks.



## Key Capabilities

- **Penetration Tests Across 50+ Types:** Conduct thorough testing for everything from applications to AI/ML systems.
- **Expert Validation and Support:** Ensure accuracy, context, and guidance through human expertise.
- **Context-Driven Insights:** Access instant visibility across findings and workflows with continuous monitoring.
- **Attack Surface Visibility:** Continuously monitor your entire digital landscape, including company assets, shadow IT, domain monitoring, and dark web exposures.
- **Vulnerability Prioritization:** Discover and prioritize vulnerabilities across your attack surface, with insights into exposure, impact, and exploitability.
- **Attack Simulation:** Simulate real-world attacker behaviors for detective controls validation.
- **Expedited Remediation:** Streamline and automate remediation workflows into your existing security ecosystem.

## The NetSPI Advantage

NetSPI delivers the perfect balance of automation and expertise. Our approach ensures you get the depth of human analysis with the scale of intelligent automation.



### People

- **350+ In-House Security Experts** with deep domain expertise across all testing disciplines
- **Rigorous Methodology** ensuring consistent, high-quality results across all engagements
- **Specialized Skills** in emerging areas like AI/ML testing, cloud security, and red teaming



### Process

- **Programmatic Approach** with strategic guidance tailored to your security journey
- **White-Glove Support** with dedicated client delivery management
- **Continuous Improvement** methodology that evolves with the threat landscape



### Technology

- **Deep Visibility** into vulnerabilities, exposures, and misconfigurations that others miss
- **AI-powered Capabilities** that amplify human expertise without replacing it
- **Context-driven Insights** with visibility across all findings and workflows

## About NetSPI

NetSPI® pioneered Penetration Testing as a Service (PTaaS) with its AI-powered platform supported by more than 350 in-house cybersecurity experts. Specializing in 50+ pentest types, attack surface visibility, vulnerability prioritization, and attack simulation, NetSPI delivers security testing with unprecedented clarity, speed, and scale. Trusted by 90% of the top 10 U.S. banks and many Fortune 500 companies, NetSPI sets the standard for modern AI-driven pentesting. Founded in 2001 and headquartered in Minneapolis, MN, NetSPI is available on the AWS Marketplace. Follow us on LinkedIn and X.

